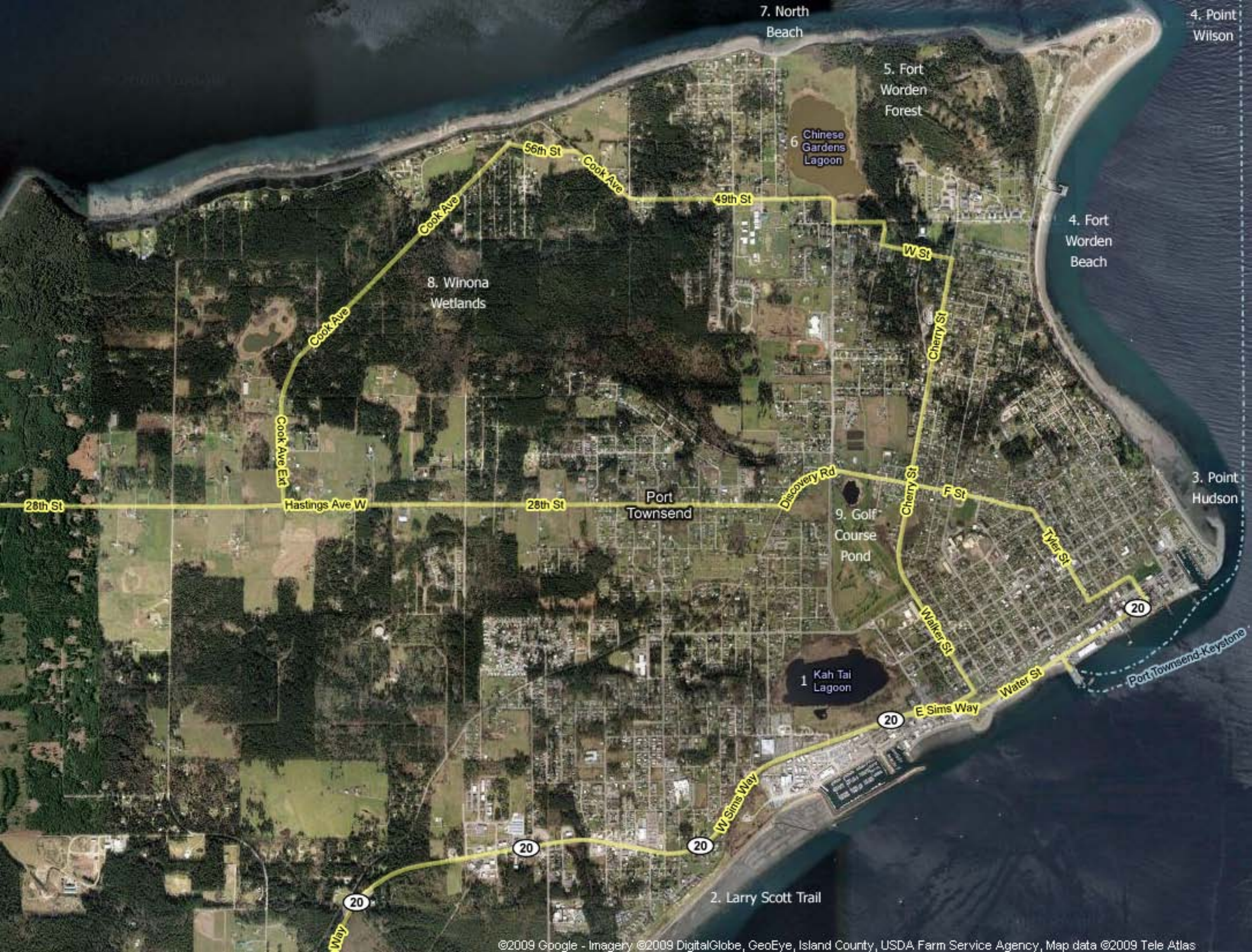


Where to find BIRDS in the Port Townsend area

Admiralty Audubon Society

Port Townsend Map

1. **KahTai Lagoon:** A brackish lagoon with trails. You can park your vehicle at the pavilion and restrooms. The driveway is behind Henery's Hardware. S: 5 species of swallows, warblers, nighthawk, marsh wren, Virginia rail, great blue heron, cedar waxwing. F: pied-billed grebe, hooded merganser, scaup, bufflehead, lesser and greater yellowlegs, dowitchers, sandpipers, yellow-rumped warbler, snipe.
2. **Larry Scott Trail:** Just west of Boat Haven Marina. Park your vehicle near restrooms. S: bald eagle, black-bellied plover, Bonaparte's gull, black turnstone; rough-winged swallow and guillemots nest in top of bluff. F: 5 species of sparrows, barn owl in bluff, eagle, loon, hooded merganser, red-tailed hawk, goldeneye.
3. **Point Hudson:** The spit out from point F: black brant, black turnstone, black oystercatcher, sanderling, dunlin, surfbird, harlequin duck. S: rhinoceros auklet, Heerman's gull.
4. **Fort Worden Beach, Point Wilson:** Guillemots have nest boxes under pier. Near Lighthouse: surf and white-winged scoter, rhinoceros auklet (in spring watch as hundreds carry mouthfuls of small fish to feed young), bufflehead, harlequin, common murre, marbled and ancient murrelet, sanderling, red-breasted merganser, horned and red-necked grebe, common and Pacific and red-throated loon, double-crested and Brandt's and pelagic cormorant, Thayer's gull.
5. **Fort Worden Forest:** Typical Douglas fir forest habitat. Pine siskin, red crossbill, black-capped and chestnut-sided chickadees, ruby- and golden-crowned kinglets, winter wren, varied and Swainson's thrush, Anna's hummingbird. S: orange-crowned warbler, olive-sided and Pacific slope flycatchers, migrating warblers and vireos.
6. **Chinese Gardens Lagoon:** Park at North Beach County Park at end of Kuhn Street. Brackish lagoon, with hooded merganser, shoveler, scaup, bufflehead, pintail, green-winged teal, great blue heron, song sparrow, marsh wren. Look for bald eagle nest in tree that looks like the Space Needle, on the far side of the lagoon from the parking lot. There is a fresh water pond in the forest by the SE corner. Look there for green-winged teal, ring-necked duck, gadwall, and perhaps wood duck.
7. **North Beach:** Park at North Beach County Park at end of Kuhn Street. Can walk the beach in either direction, east to Point Wilson Lighthouse, or west six miles to Cape George, at low tide. Black oystercatcher on rocks west of parking area near surf, bufflehead, harlequin, red-breasted merganser, horned grebe, surf scoter, bald eagle, great blue heron. S: whimbrel migrants.
8. **Winona Wetlands:** Park at end of Willamette Street, walk on path behind barrier. Pileated and hairy woodpeckers, songbirds, 4 species of hawk, owls, western tanager, black-headed grosbeak, rufous hummingbird, flycatchers, warblers, vireos, Swainson's thrush.
9. **Golf Course Pond:** Park on San Juan Avenue across from pond. Get close-up view of dabbling ducks, Cooper's hawk, Virginia rail, swallows, marsh wren.



Area Map

10. **Protection Island:** Washington State Audubon has called this the most important nesting area for seabirds in Puget Sound. 70% of the nesting seabirds of Puget Sound and the Strait of Juan de Fuca nest on the island. No entry permitted to island, but you can boat around it. For cruise information, see www.ptmsc.org. It is not unusual during migration to see as many as 30 species of birds on these trips. Rhinoceros auklet, gulls, guillemot, cormorants. May-July tufted puffin.
11. **Indian and Marrowstone Islands, Oak Bay:** The perimeter of both islands, Kilisut Harbor, and Oak Bay lagoons. Large numbers of wintering waterfowl, 200 black brant at Oak Bay, harlequin, bald eagle. Many shorebirds on Rat Island at mouth of Kilisut Harbor and on spit at Fort Flagler.

